



GIS Services • Real Estate Research • Consulting

25+ Acre Land Sales in North Carolina 2009-2010

Disclaimer and Property Rights

All information contained herein is protected property of SiteTech Systems and none of such information may be copied or otherwise reproduced, repackaged, further transmitted, transferred, disseminated, redistributed or resold, or stored for subsequent use for any purpose, in whole or in part, in any form or manner or by any means whatsoever, by any person without SiteTech Systems prior written consent. All information contained herein is obtained by SiteTech Systems from sources believed by it to be accurate and reliable. Because of the possibility of human and mechanical error as well as other factors, however, all information contained herein is provided “AS IS” without warranty of any kind.

25+ Acre Land Sales (all Land Types)



GIS Services • Real Estate Research • Consulting

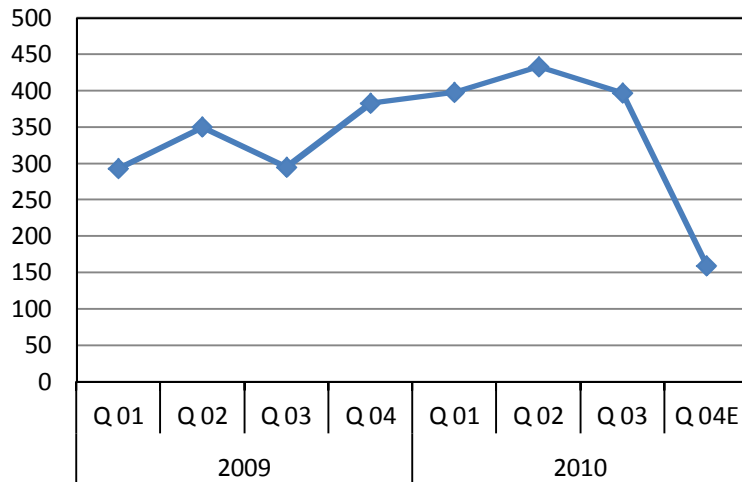
25 + Acre Land Sales By Quarter
(All Land Types)

YEAR	QTR	# Sales
2009	Q.01	293
	Q.02	350
	Q.03	295
	Q.04	383
2010	Q.01	398
	Q.02	433
	Q.03	397
	Q.04E	159
TOTAL SALES		2708

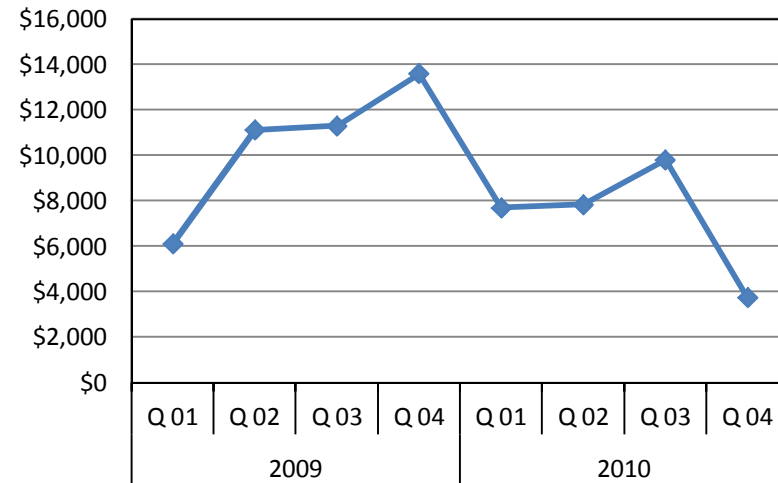
Average \$/Acre By Quarter
(All Land Types)

YEAR	QTR	Ave \$/Acre
2009	Q.01	\$6,118
	Q.02	\$11,116
	Q.03	\$11,298
	Q.04	\$13,588
2010	Q.01	\$7,690
	Q.02	\$7,833
	Q.03	\$9,809
	Q.04	\$3,736

25 + Acre Land Sales

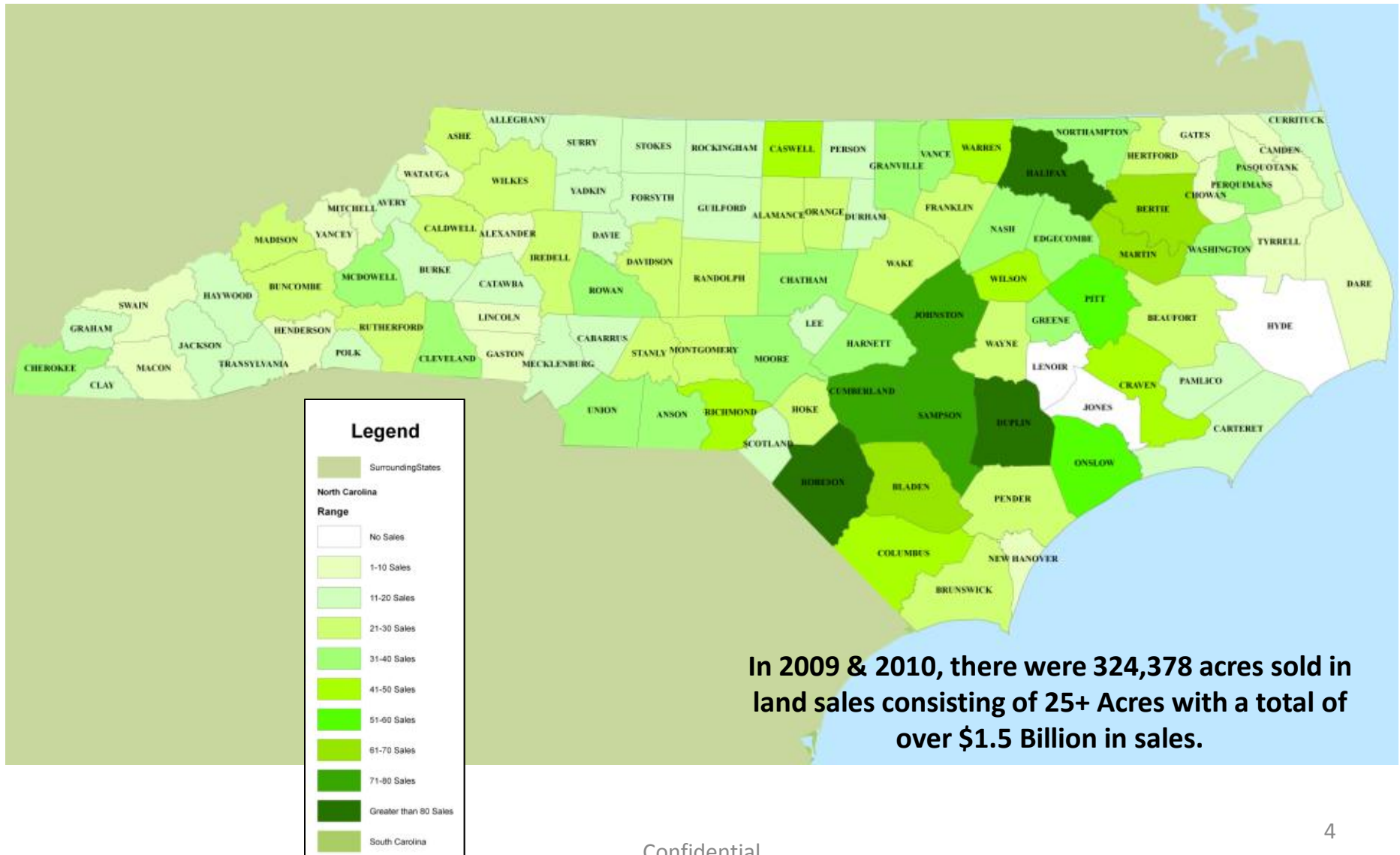


Average Price Per Acre



NC Land Sales Activity By County

(ALL NC 25+ Acre Sales)



25+ Acre Land Sales

(Forest, Farm & Agriculture Land)



GIS Services • Real Estate Research • Consulting

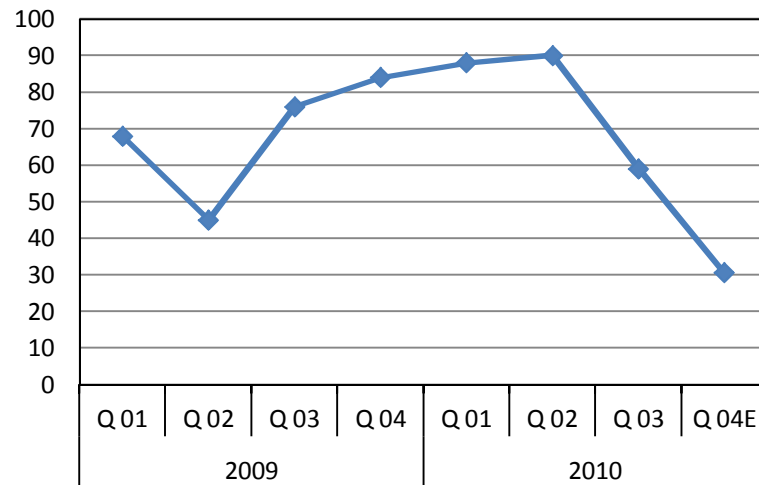
25 + Acre Land Sales By Quarter
(Forest, Agriculture & Farm Sales)

YEAR	QTR	# Sales
2009	Q 01	68
	Q 02	45
	Q 03	76
	Q 04	84
2010	Q 01	88
	Q 02	90
	Q 03	59
	Q 04E	31
TOTAL SALES		541

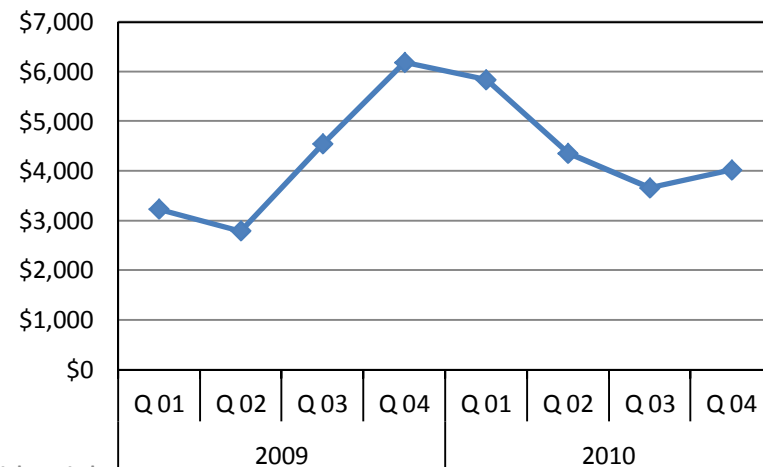
Average \$/Acre By Quarter
(Forest, Agriculture & Farm Sales)

YEAR	QTR	Ave \$/Acre
2009	Q 01	\$3,232
	Q 02	\$2,794
	Q 03	\$4,547
	Q 04	\$6,191
2010	Q 01	\$5,838
	Q 02	\$4,356
	Q 03	\$3,662
	Q 04	\$4,021

25+ Acre Land Sales



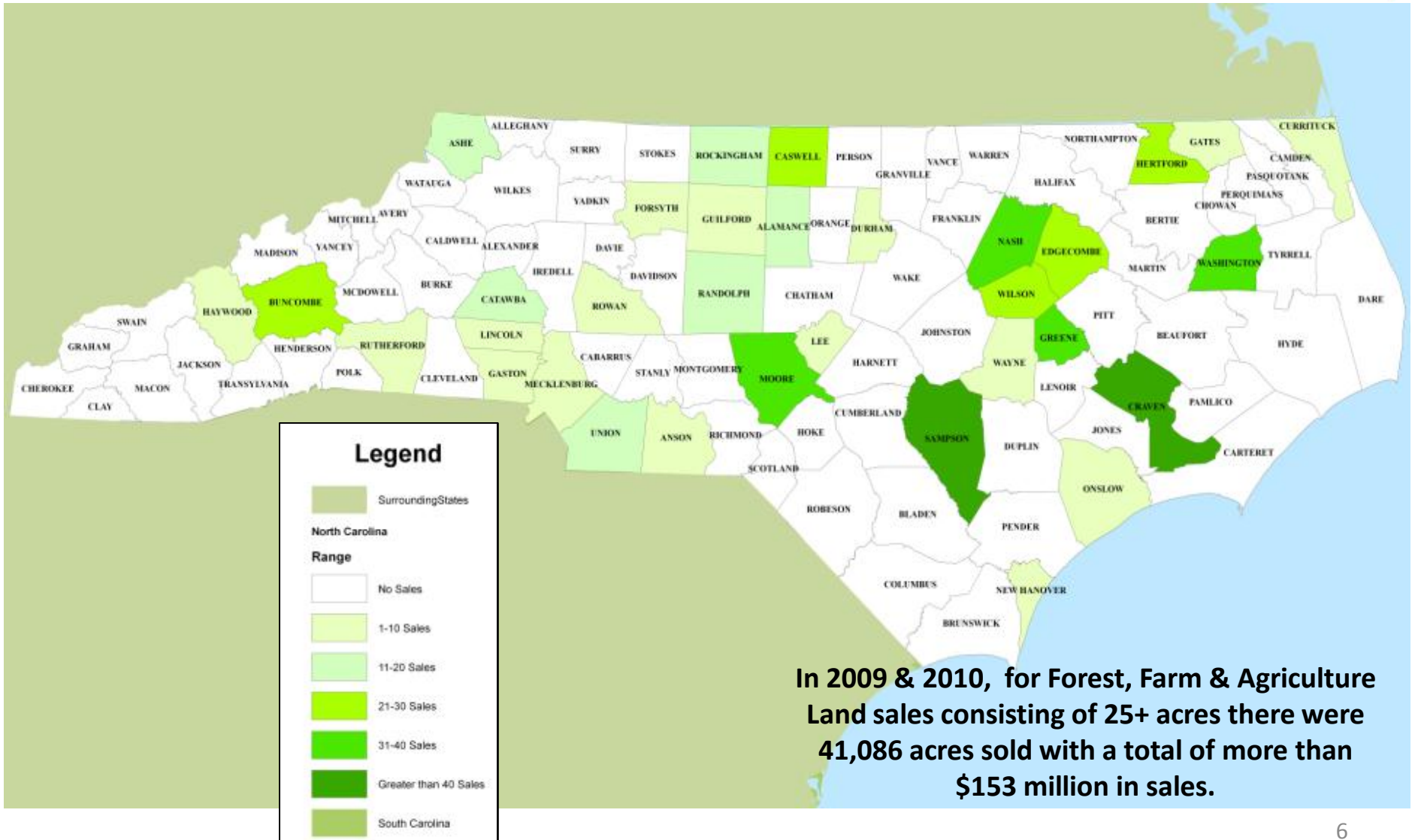
Average Price/Acre



Confidential

NC Land Sales Activity By County

(Farm, Agriculture & Forest 25+ Acre Sales Only)



Summary of 25+ Land Sales (Farm, Forest & Agricultural)

County	2009 Sales	2009 Avg \$/Acre	2010 Sales	2010 Avg \$/Acre	Total Sales	09/10 Avg \$/Acre
Alamance	6	\$2,790	9	\$3,468	15	\$3,197
Anson	2	\$4,522	2	\$4,703	4	\$4,612
Ashe	15	\$4,927	4	\$1,338	19	\$4,248
Buncombe	12	\$9,934	9	\$20,591	21	\$14,501
Caswell	16	\$1,266	13	\$2,233	29	\$1,699
Catawba	10	\$3,020	5	\$2,297	15	\$2,779
Craven	18	\$2,177	24	\$2,038	42	\$2,097
Currituck	0	N/A	7	\$3,500	7	\$3,500
Durham	3	\$7,143	2	\$7,724	5	\$7,724
Edgecombe	16	\$2,915	14	\$3,995	30	\$3,449
Forsyth	2	\$5,973	4	\$3,290	6	\$4,184
Gaston	0	N/A	1	\$12,861	1	\$12,861
Gates	5	\$1,297	3	\$1,092	8	\$1,220
Greene	32	\$5,199	6	\$3,262	38	\$4,893
Guilford	1	\$629	3	\$2,653	4	\$2,147
Haywood	1	\$2,817	0	N/A	1	\$2,817
Hertford	9	\$4,314	15	\$1,418	24	\$2,504
Lee	1	\$1,903	3	\$1,258	4	\$1,419
Lincoln	1	\$87	4	\$4,051	5	\$3,258
Mechlenburg	1	\$22,453	1	\$14,450	2	\$18,451
Moore	19	\$4,901	14	\$5,118	33	\$4,993
Nash	12	\$7,673	19	\$4,220	31	\$5,557
New Hanover	0	N/A	1	\$879	1	\$879
Onslow	1	\$5,143	3	\$10,418	4	\$9,099
Randolph	4	\$2,093	10	\$7,775	14	\$6,152
Rockingham	6	\$2,300	6	\$2,861	12	\$2,586
Rowan	1	\$13,115	0	N/A	1	\$13,115
Rutherford	1	\$16,649	6	\$1,888	7	\$3,996
Sampson	27	\$3,224	46	\$5,221	73	\$4,476
Union	9	\$6,562	4	\$11,484	13	\$8,076
Washington	25	\$5,843	11	\$3,719	36	\$5,194
Wayne	2	\$1,032	3	\$11,666	5	\$7,412
Wilson	14	\$3,080	13	\$3,905	27	\$3,477
TOTAL	272	\$4,437	265	\$4,658	537	\$4,546